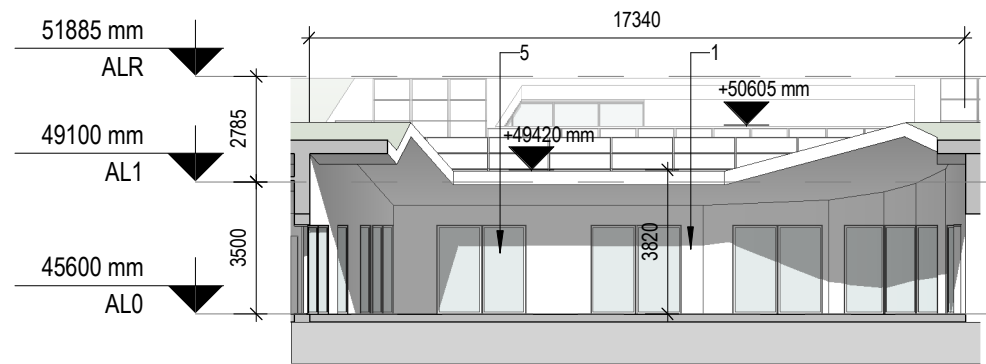
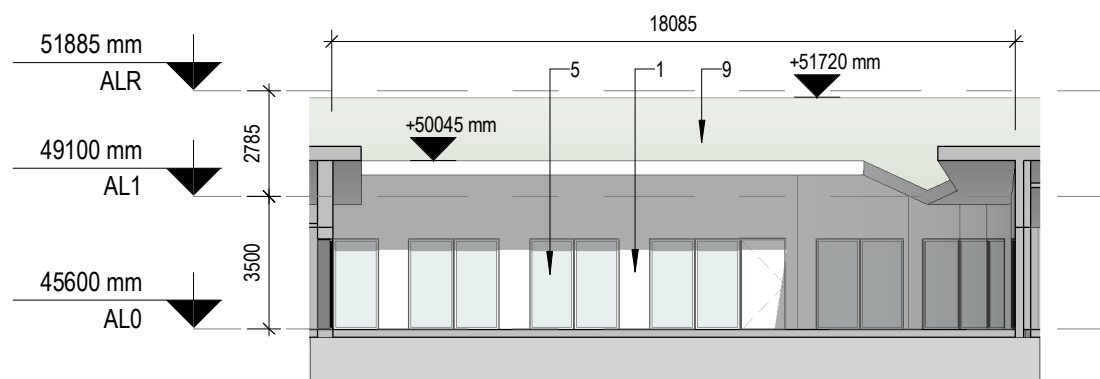


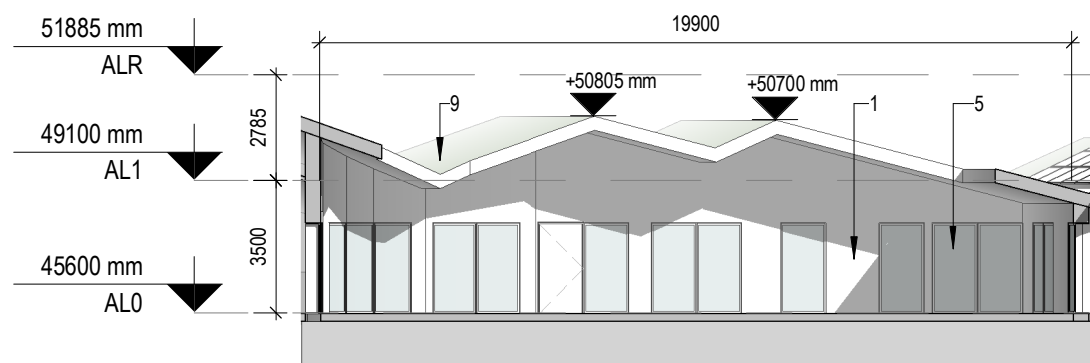
1 Elevation Courtyard East
4502 Scale: 1 : 200



2 Elevation Courtyard North
4502 Scale: 1 : 200



3 Elevation Courtyard South
4502 Scale: 1 : 200



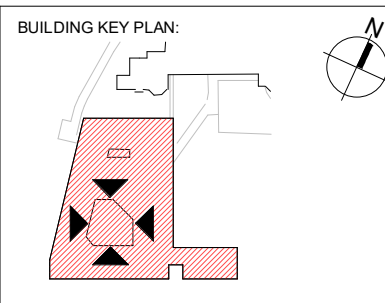
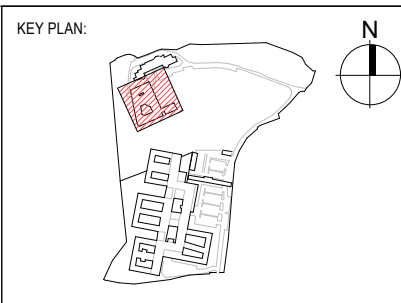
4 Elevation Courtyard West
4502 Scale: 1 : 200

Material Legend	
No	Description
1	Select Brick Facing - Light Tone
5	Typical PPC Double Glazed Aluminium Window
9	Green roof

COPYRIGHT:
The design and details shown on this drawing are applicable to The Named Project only and may not be; reproduced, modified or relayed in whole or part or be used for any other project or purpose without the prior written permission of TOT Architects with whom copyright resides.

DO NOT SCALE this drawing. Use figured dimensions only. The Contractor is responsible for checking all levels and dimensions on site prior to commencement of works. Any discrepancies are to be referred to the ARCHITECT.

Drawings to be read in conjunction with all other Consultants Drawings & Specifications were relevant. Proprietary items shall be fixed in strict accordance with the Manufacturer's Instructions. Sizes of proprietary items shall be checked with Manufacturer.



REVISIONS:

DATE	REV	DESCRIPTION
17/04/26	0	ISSUED FOR PLANNING

TOT ARCHITECTS

REGISTERED OFFICE
49 Upper Mount Street
Dublin 2, D02 FR85, Ireland

T +553 1 705 7800
W www.totarch.ie
E info@totarch.ie

CLIENT:	SPUH		DRAWN:	CHECKED:	APPROVED:	DATE:	17/04/2026
PROJECT:	St. Edmundsbury Hospital Lucan		JOB NUMBER:	SHEET SIZE:	SCALE:		
PROJECT STAGE :	Planning		20-77	A3 L	1 : 200		
DRAWING TITLE:	Proposed Adolescent Unit Courtyard Elevation		INFORMATION CONTAINER IDENTIFICATION: SPMHS - AU - AL0 - DR - TOT - AR - 4502				
	ACCEPTANCE CODE:	PURPOSE CODE:	REVISION:				
	S	P3	0				